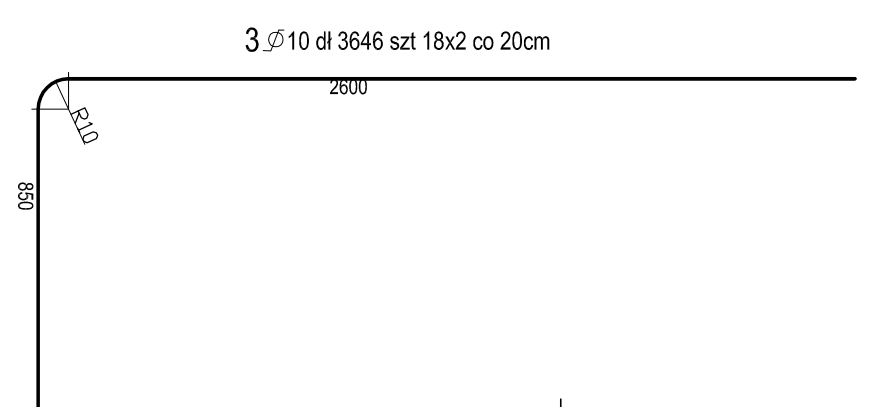



Technical drawing of a rectangular frame assembly, likely a window or door frame. The drawing shows a cross-section of the frame with various components labeled with numbers 1 through 11. The frame is composed of several layers, including a central panel (7) and outer frames (3, 10, 11). The drawing is oriented vertically, with the top of the frame at the bottom of the image. The components are labeled as follows:

- 1: A small rectangular component, possibly a hinge or fastener, located on the left side of the frame.
- 2: A small rectangular component, possibly a hinge or fastener, located on the left side of the frame.
- 3: The outer frame or casing, shown on both the left and right sides.
- 4: A small rectangular component, possibly a hinge or fastener, located on the left side of the frame.
- 5: A small rectangular component, possibly a hinge or fastener, located on the left side of the frame.
- 6: A small rectangular component, possibly a hinge or fastener, located on the left side of the frame.
- 7: The central panel or glass unit, shown in two positions (top and bottom) with a vertical arrow indicating movement.
- 8: A small rectangular component, possibly a hinge or fastener, located on the left side of the frame.
- 9: A small rectangular component, possibly a hinge or fastener, located on the left side of the frame.
- 10: A small rectangular component, possibly a hinge or fastener, located on the left side of the frame.
- 11: A small rectangular component, possibly a hinge or fastener, located on the left side of the frame.

[illegible]

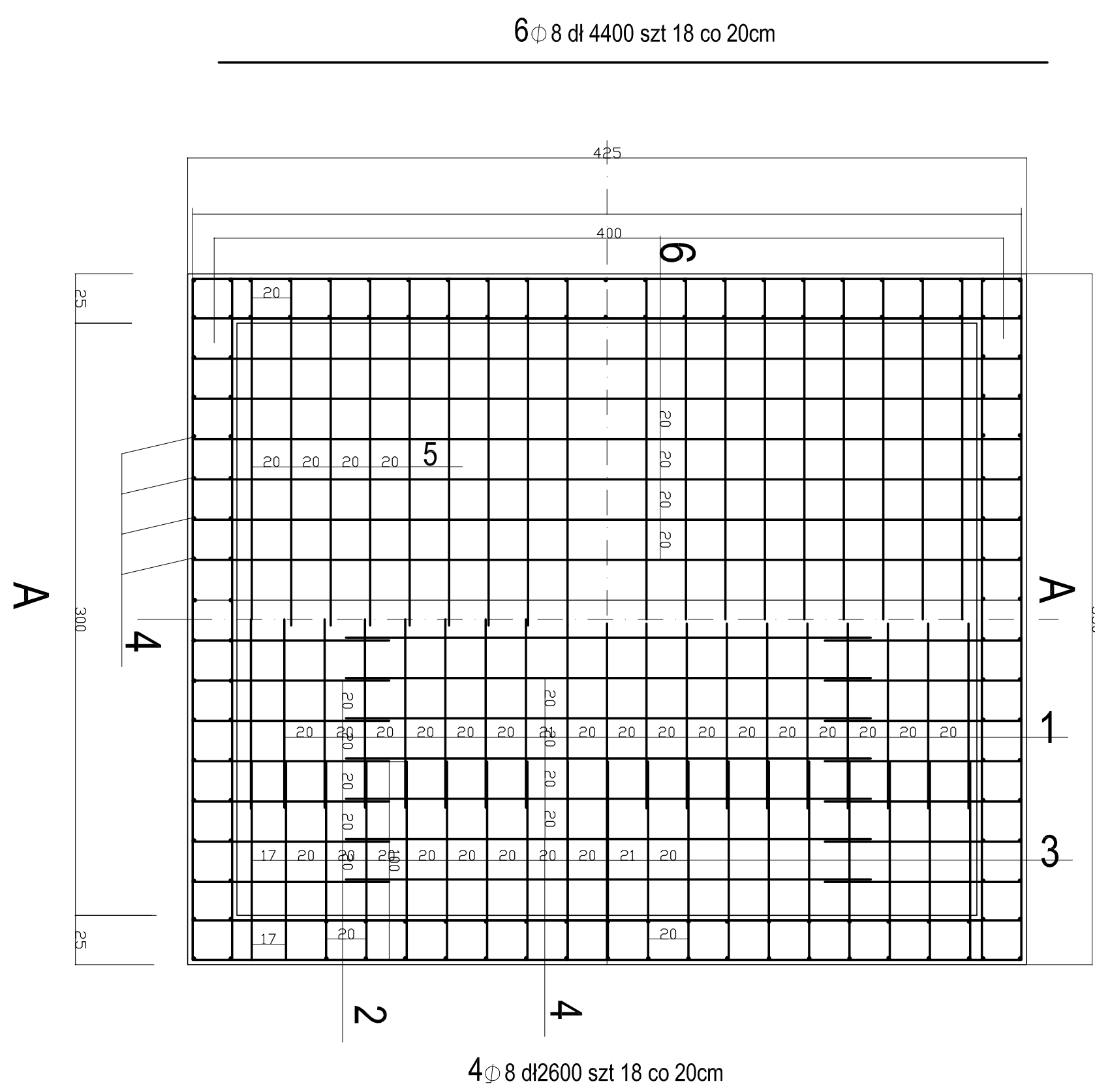
12. Φ 8 di 2160 szl28 co 20cm



5 Ø 10 di 3450 szt 22 co 20cm

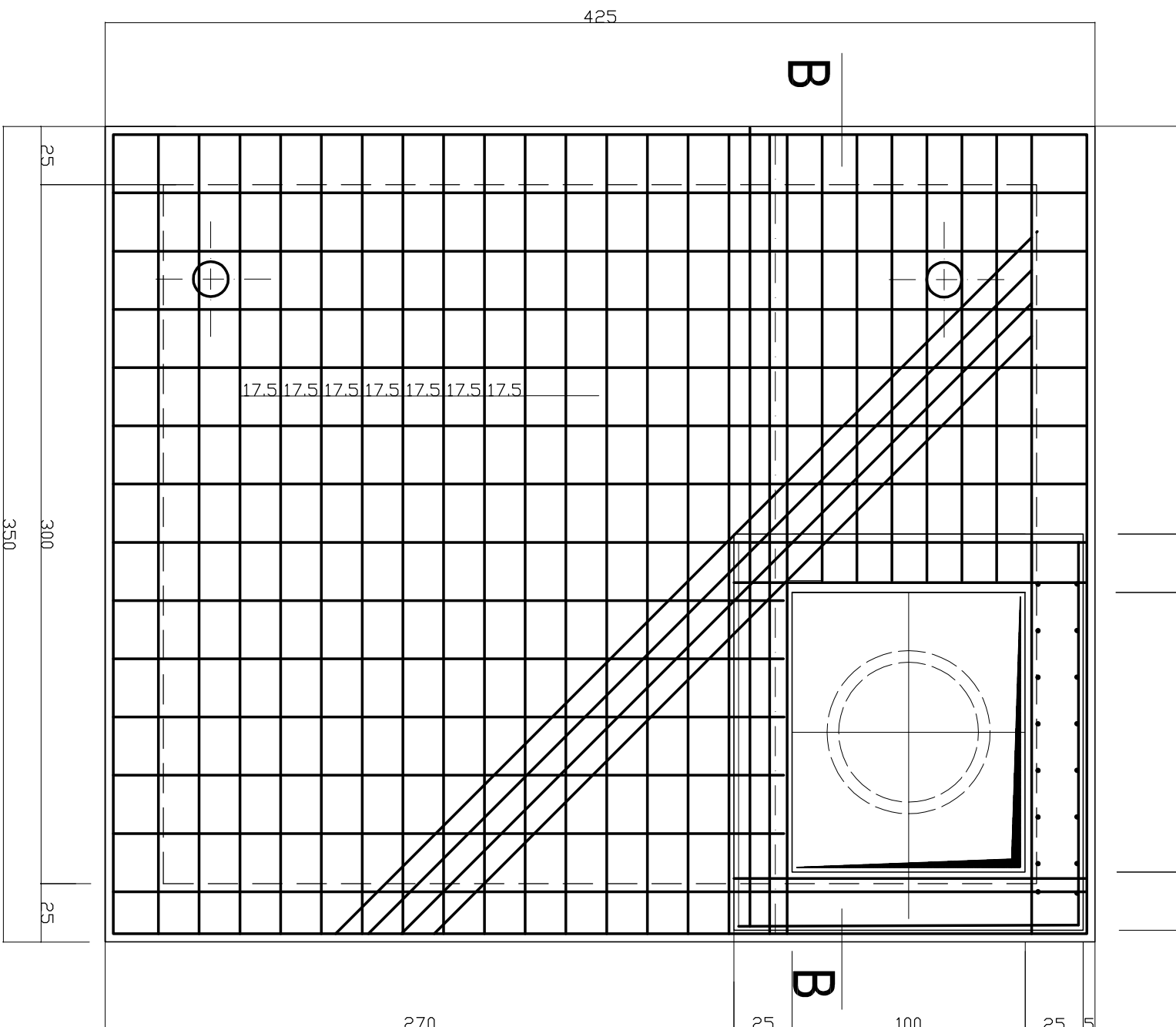
1 Ø 8 dł 1750 szt 22 co 20cm

GÓRA PŁYTY DÓŁ PŁYTY



2 ϕ 12d 3300 sat 8 co 15cm

2 ϕ 12d 5950 sat 18 co 17.5cm



10⁰.8 at 5050 sct 13x2 co 20cm

Technical drawing of a rectangular table. The drawing includes a top view and a side view. The top view shows a rectangular table with a central panel and four side panels. The side panels are labeled with the number 7. The central panel is labeled with the number 3. The side view shows the table's profile with a height of 80 cm. The table is labeled with the number 4. The drawing includes dimensions: 140 cm for the width and 200 cm for the depth. The table is labeled with the number 9. The drawing includes a note: 9 Ø 14 d 3650 sat 14x2 co 20cm. The drawing includes a note: 8 Ø 10 d 5570 sat 13x2 co 20cm.

14 Ø 8 di 1650 szl 8 co 15cm

ZESTAWIENIE STALI ZBROJENIOWE:			
Ø	dł w ciężar	ilosc "n"	ciężar "n" elem
mm	elem	w. elem	elem
mm	mb	KG	szl KG
8	631.98		249.63
10	807.54		500.00
12	133.50		118.81
Razem		27.75	886.44

	elem	w.elem	elem	n° elem
8	631.98			249.63
10	807.54			500.00
12	133.50			118.81
Razem	27.75			868.44

1. PODŁOŻE Z BETONU B10
2. BETON WIBROWANY
3. IZOLACJA POWŁOKOWA
4. IZOLACJA Z 3-CH WARSTW PAPY (PAP IZOLACYJNA, +2 PAPA TERMOGRYWALNA

STOPA FUNDAMENTOWA STF-1

NINIEJSZE OPRAWOWANIE STANOWI DZIEŁO AUTORSKIE I PODLEGA OCHRONIE ZGODNIE Z USTAWĄ 83 Z DNIA 04.02.1994 O PRAWIE AUTORSKIM I PRAWACH POKREWNYCH

NINIEJSZE OPRAWOWANIE STANOWI DZIEŁO AUTORSKIE I PODLEGA OCHRONIE ZGODNIE Z USTAWĄ 83 Z DNIA 04.02.1994 O PRAWIE AUTORSKIM I PRAWACH POKREWNYCH