

RZUT PARTERU  
1:100

NADPROŹIE N4  
2x 2IE 160  
(wg DUS.NR 36)

250  
215

4S/240

3D/180

2D/180

S/210

D/120

4N/210

2D/120

D/120

4N/210

2D/120P

4N/120

D/120

4N/120

2x3D/150

2x3S/240

2x3S/240

4S/210

4S/120

4S/210

2D/120

D/120

D/120

2D/120

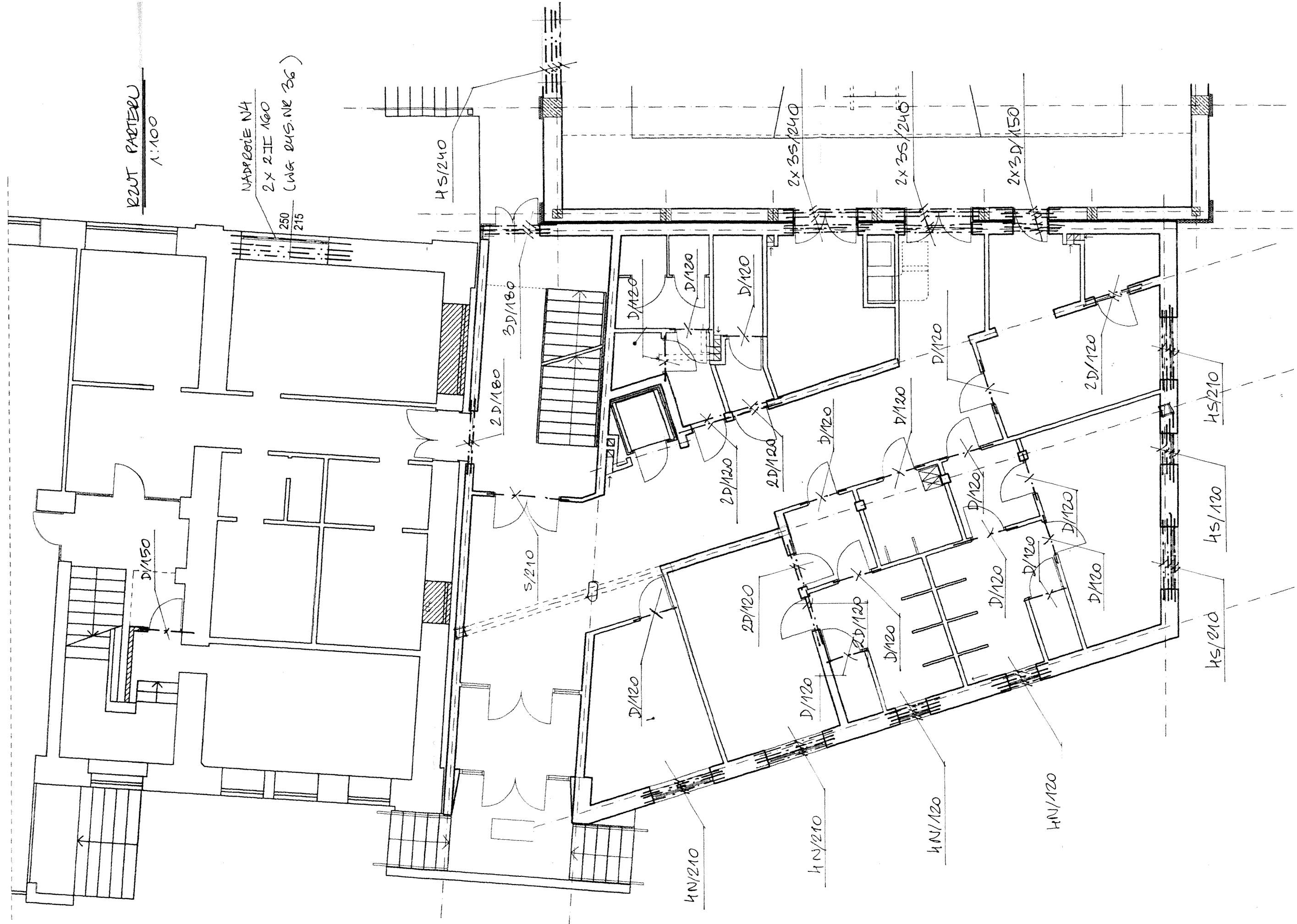
2D/120

D/120

D/120

D/120

D/120



220T I PIGRA

1:100

2 JE 160 N4

WG BUS. NR 36

1x2000E N5

(2 JE) 160 - WG BUS. NR 36

2x3 S/240

ZABIA CZNIK NR 3

POZ. 3.8.  
WG BUS. NR 11

POZ. 3.8.  
WG BUS. NR 11

4 N/120

2 D/150

3x2 N/210

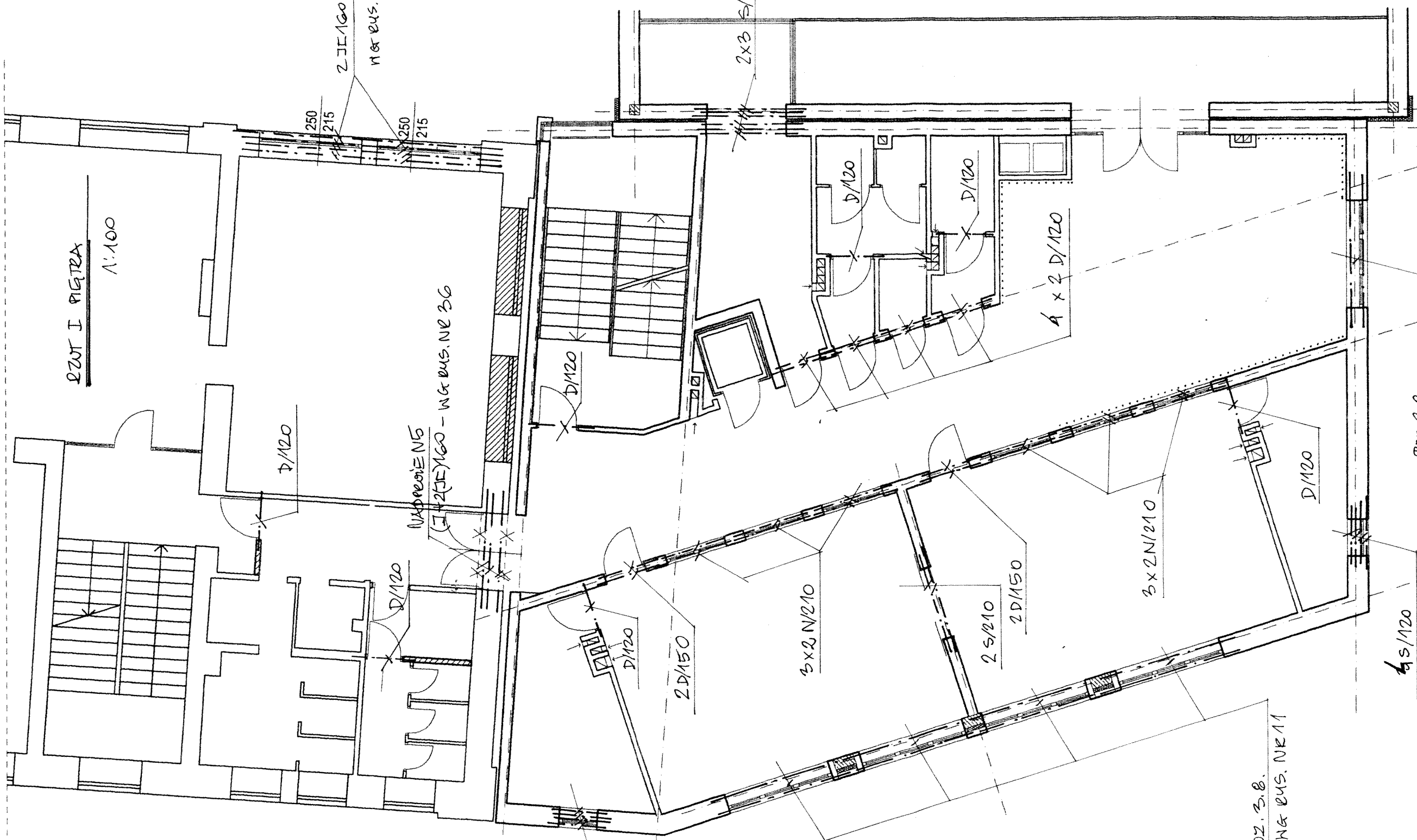
2 S/210

2 D/150

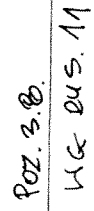
3x2 N/210

D/120

4 S/120





$\alpha_V: \gamma$ 

ZATACZNIK NR 5